

2026



**AZIMUT 86**  
THE JUNGLE

# S P E C S

**Capacity**

12 + 3 crew

**Cabins**

2 double, 2 twin

**Bathrooms**

4 bathrooms

**Length / Beam**

24 m / 5,8 m

**Fuel Cons**

650 L/h

**Cruising speed**

38 knots

**Stabilizers**

No

**General**

Sunshade, front and back sunbeds, interior and exterior sitting area, fully equipped kitchen, bluetooth music connection, interior and exterior sound system, A/C

**Included**

Captain, deckhand, stewardess, insurance, towels, complimentary drinks (water, ice, 24 soft drinks, 18 beers, 2 white wine, 2 rosé, 2 cava, 1 Champagne), snacks, fruit, snorkelling equipment, 2 paddle boards, 1 Seabob

**Mooring**

On demand

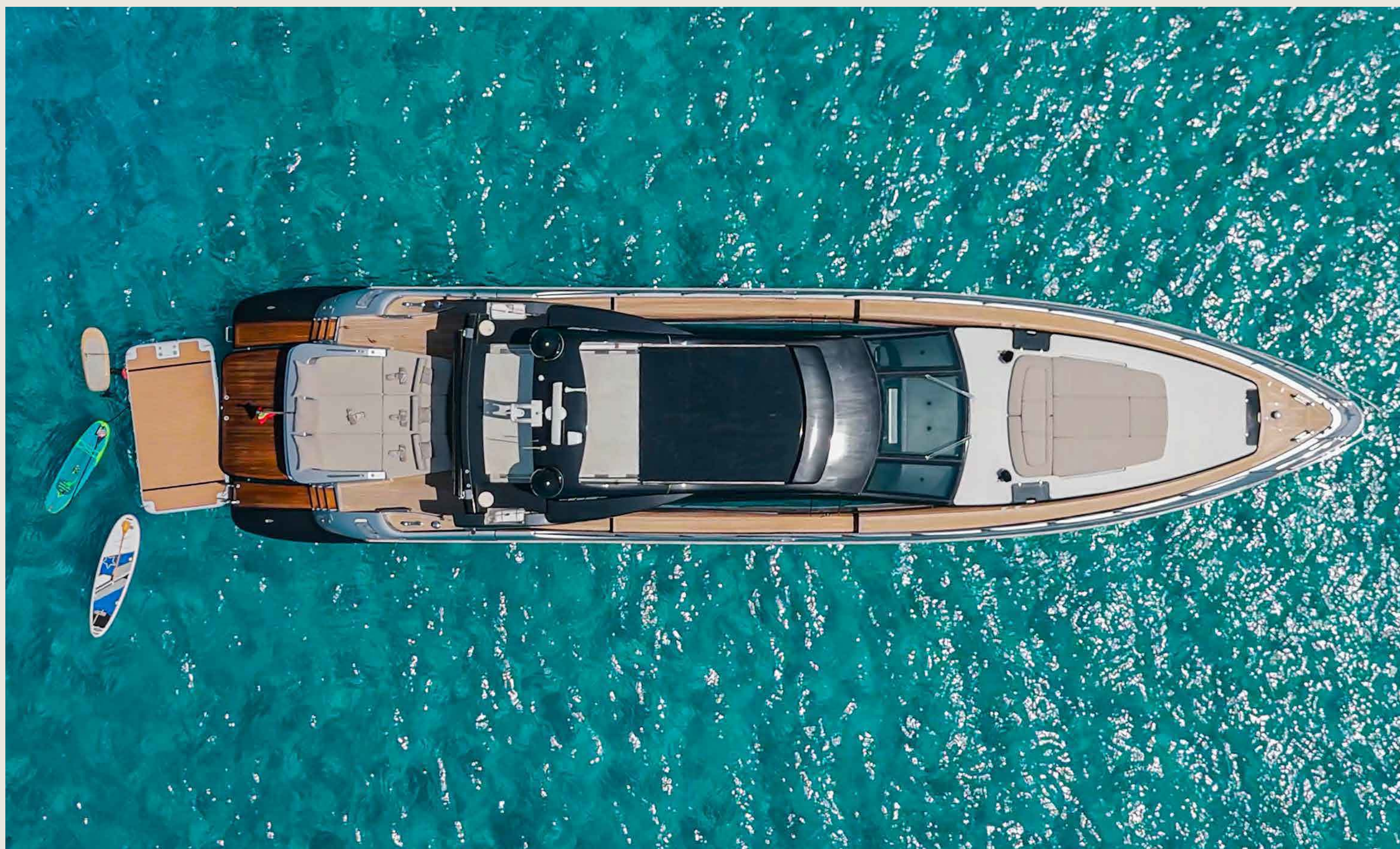
**License N°**

—

# P R I C I N G

## F U L L D A Y C R U I S E / 8 H

* High Season Mid Season Low Season	<b>9.999€</b> <b>8.999€</b> <b>7.999€</b>	* High season – 20 <sup>th</sup> June - 31 <sup>st</sup> August Mid season – 22 <sup>nd</sup> May - 19 <sup>th</sup> June & September Low season – rest of the year  <b>VAT INCLUDED</b> <b>FUEL NOT INCLUDED</b>
** Fuel estimate	<b>975 L/day</b>	** Approx. 1.5h of cruising, e.g. day out to Formentera: Ibiza - Espalmador - Illetes - Cala Saona - Ibiza.  Fuel cost may vary depending on the route and fuel prices on the day of charter.
*** Start time from 10 am Latest return at sunset		*** Charters can be extended at the discretion of the captain and at an additional hourly cost, but all boats must return to the port before nightfall.  Extra toys and drink packages are available!



A Z I M U T 8 6

T H E J U N G L E

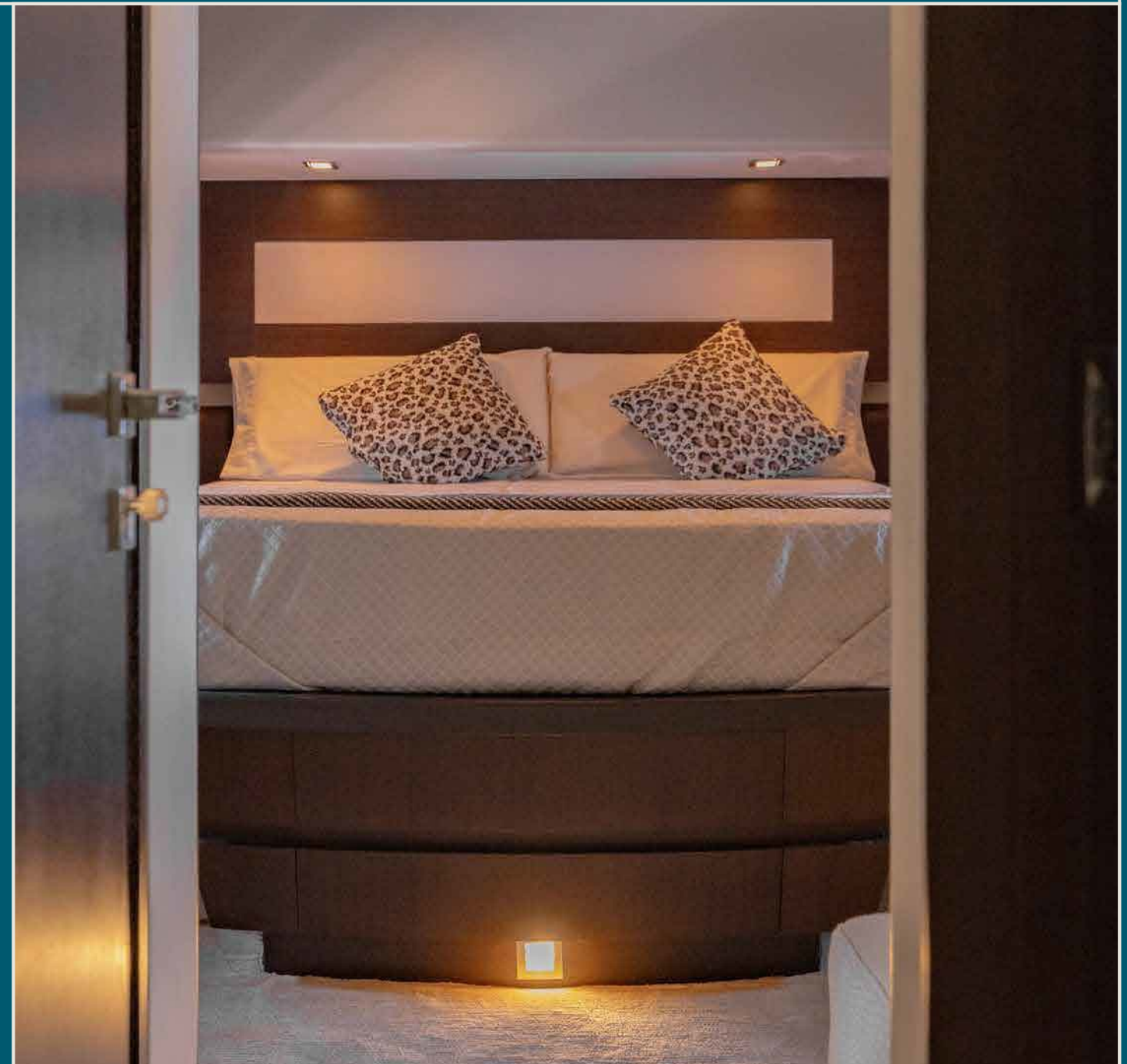
# A C C O M M O D A T I O N

## **Layout**

4 guest cabins  
4 bathrooms  
2 crew cabins

## **Capacity**

Max 12 guests on day charter  
Max 8 guests sleeping in the base port  
Max 8 guests sleeping on anchor



# A C C O M M O D A T I O N

## W E E K C H A R T E R

## O V E R N I G H T C O S T

\* High Season  
Mid Season  
Low Season

**62.999€** + OVERNIGHT COST + APA  
**56.699€** + OVERNIGHT COST + APA  
**50.399€** + OVERNIGHT COST + APA

\* High Season  
Mid Season  
Low Season

**1.250€** / night  
**1.000€** / night  
**850€** / night

**APA (Advance Provisioning Allowance) is 30%** of charter price and is charged as a deposit for any extra expenses during the charter. The unused amount is refunded at the end of the charter.

\*\* Overnight cost includes mooring cost in the base port, extra staff hours, Mediterranean breakfast, linen and cleaning.

**Extras:** fuel, special orders (food, drinks, etc.), extra toys, chef, etc.

\* High season – 20<sup>th</sup> June - 31<sup>st</sup> August  
Mid season – 26<sup>th</sup> May - 19<sup>th</sup> June & September  
Low season – rest of the year

**VAT INCLUDED**

**PLEASE REQUEST THE QUOTE FOR  
YOUR DESIRED CHARTER PERIOD**



A Z I M U T 8 6

T H E J U N G L E



A Z I M U T 8 6

T H E J U N G L E



A Z I M U T 8 6

T H E J U N G L E



A Z I M U T 8 6

T H E J U N G L E



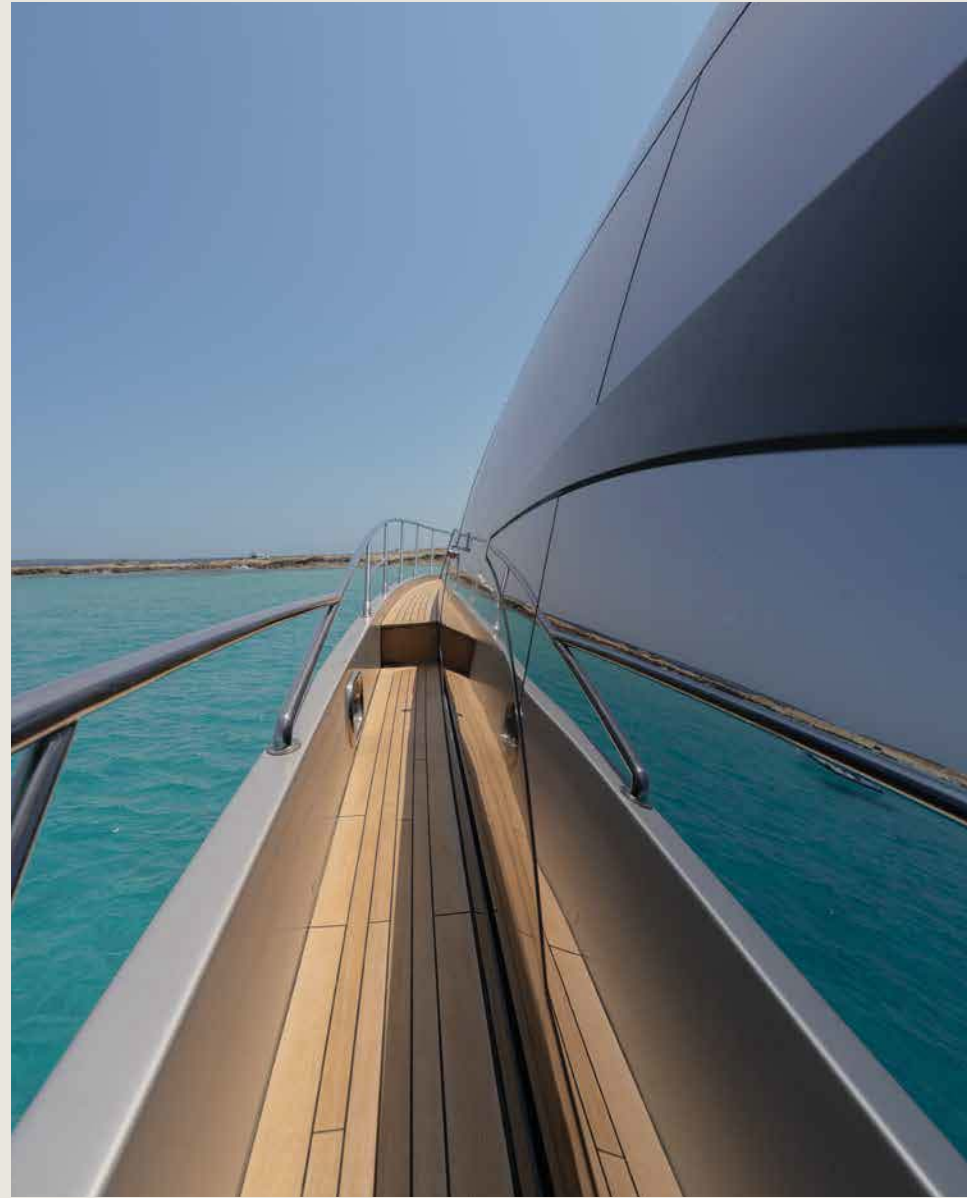
A Z I M U T 8 6

T H E J U N G L E



A Z I M U T 8 6

T H E J U N G L E



**A Z I M U T 8 6**

**T H E J U N G L E**

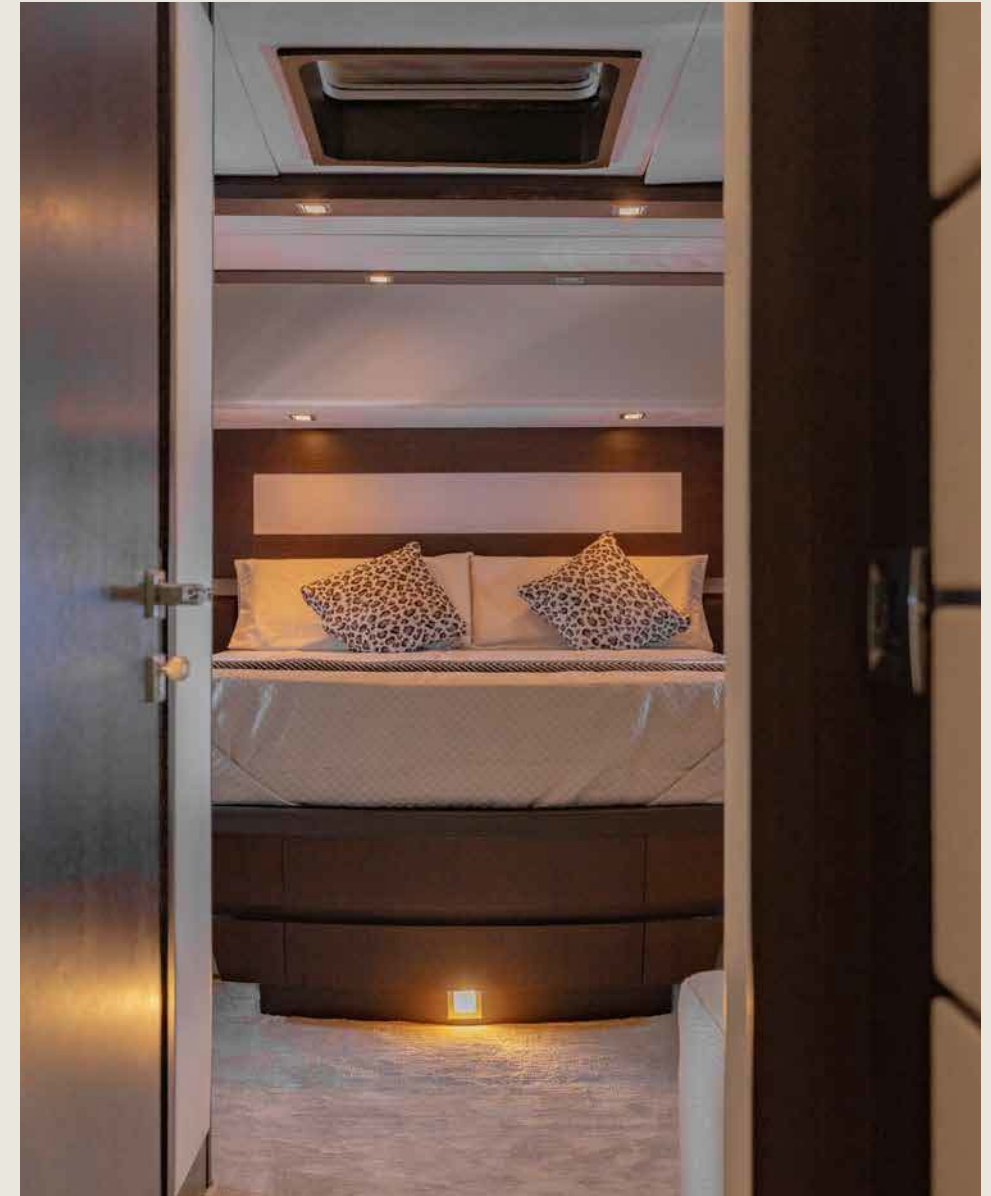


A Z I M U T 8 6

T H E J U N G L E

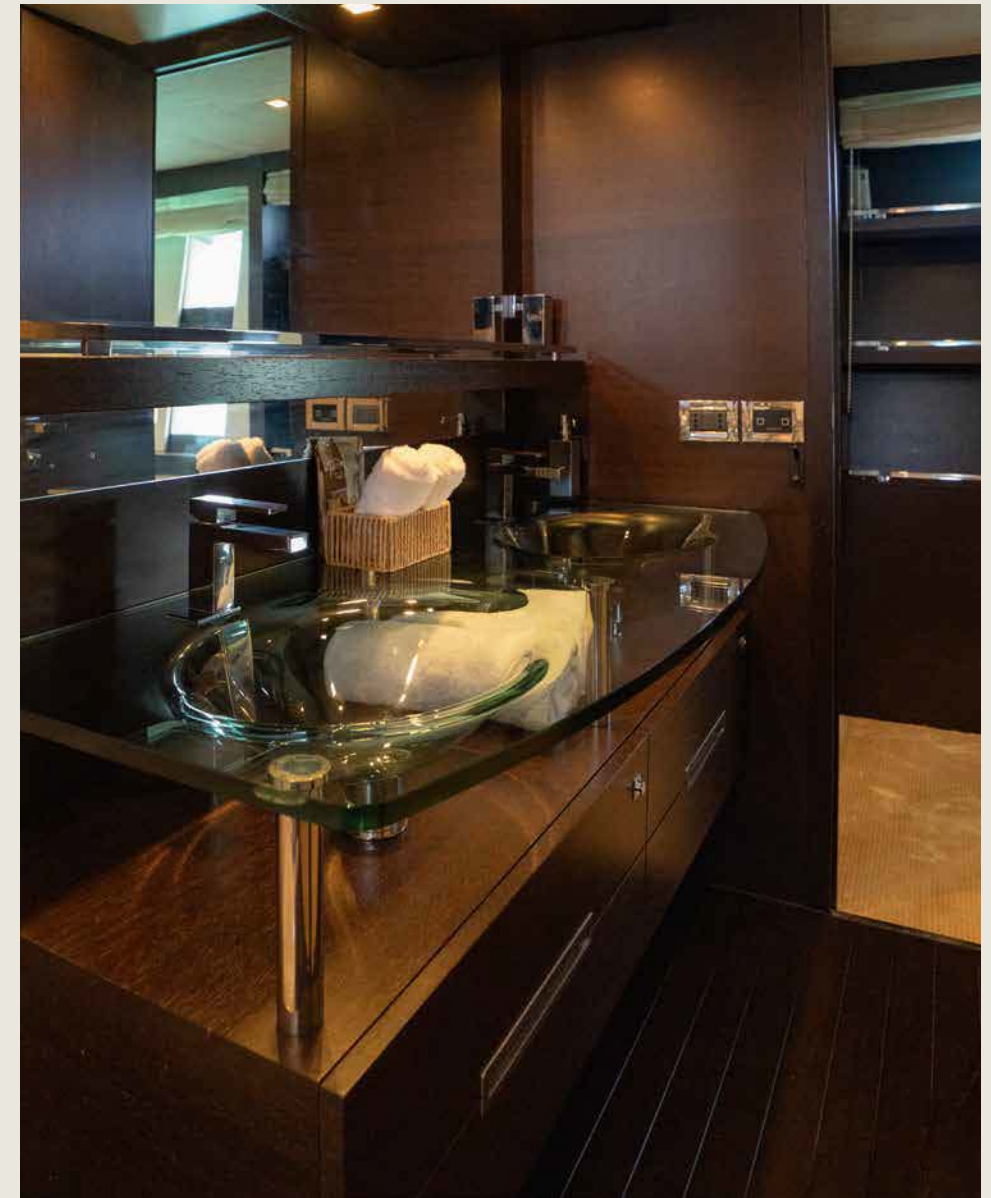






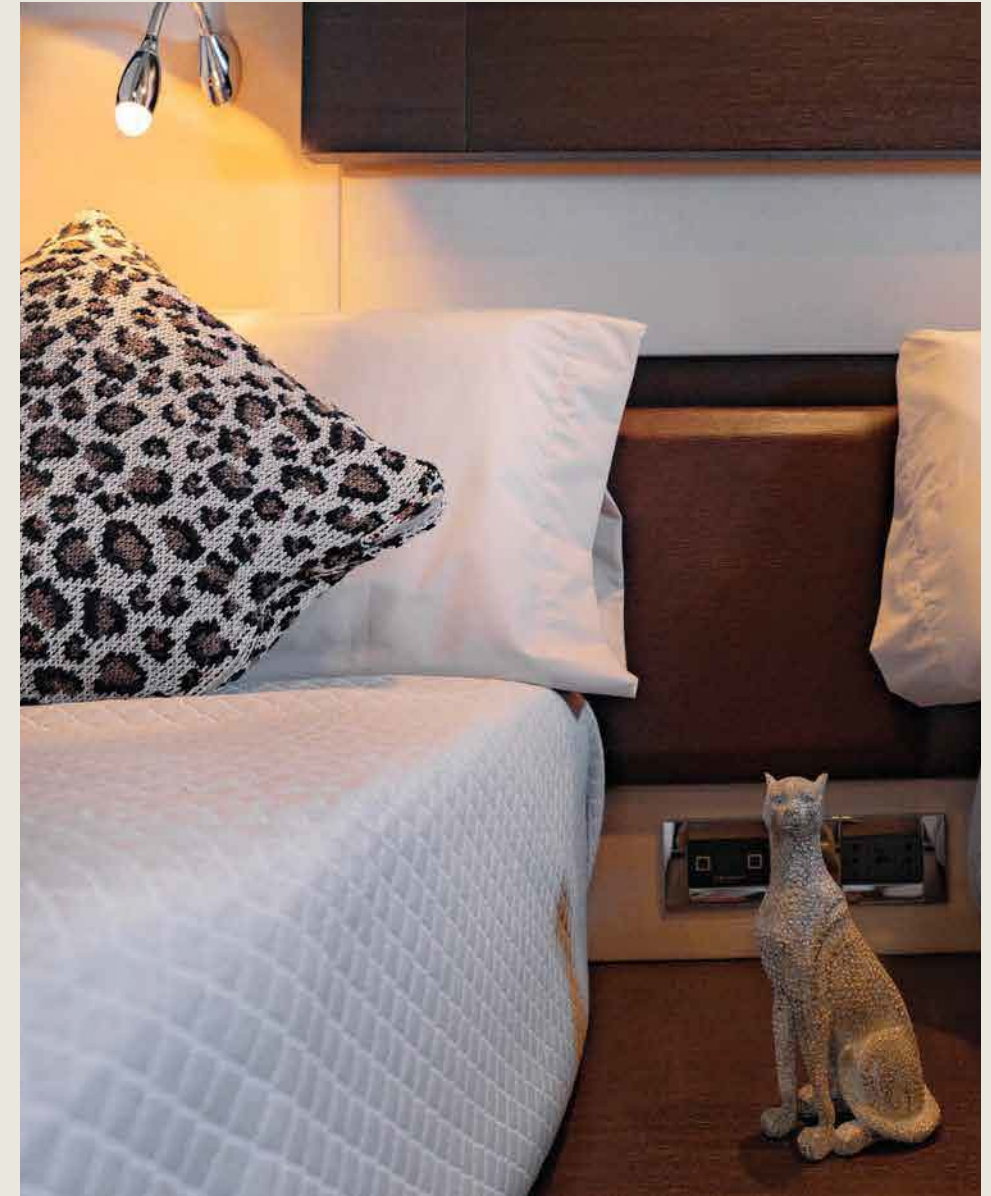
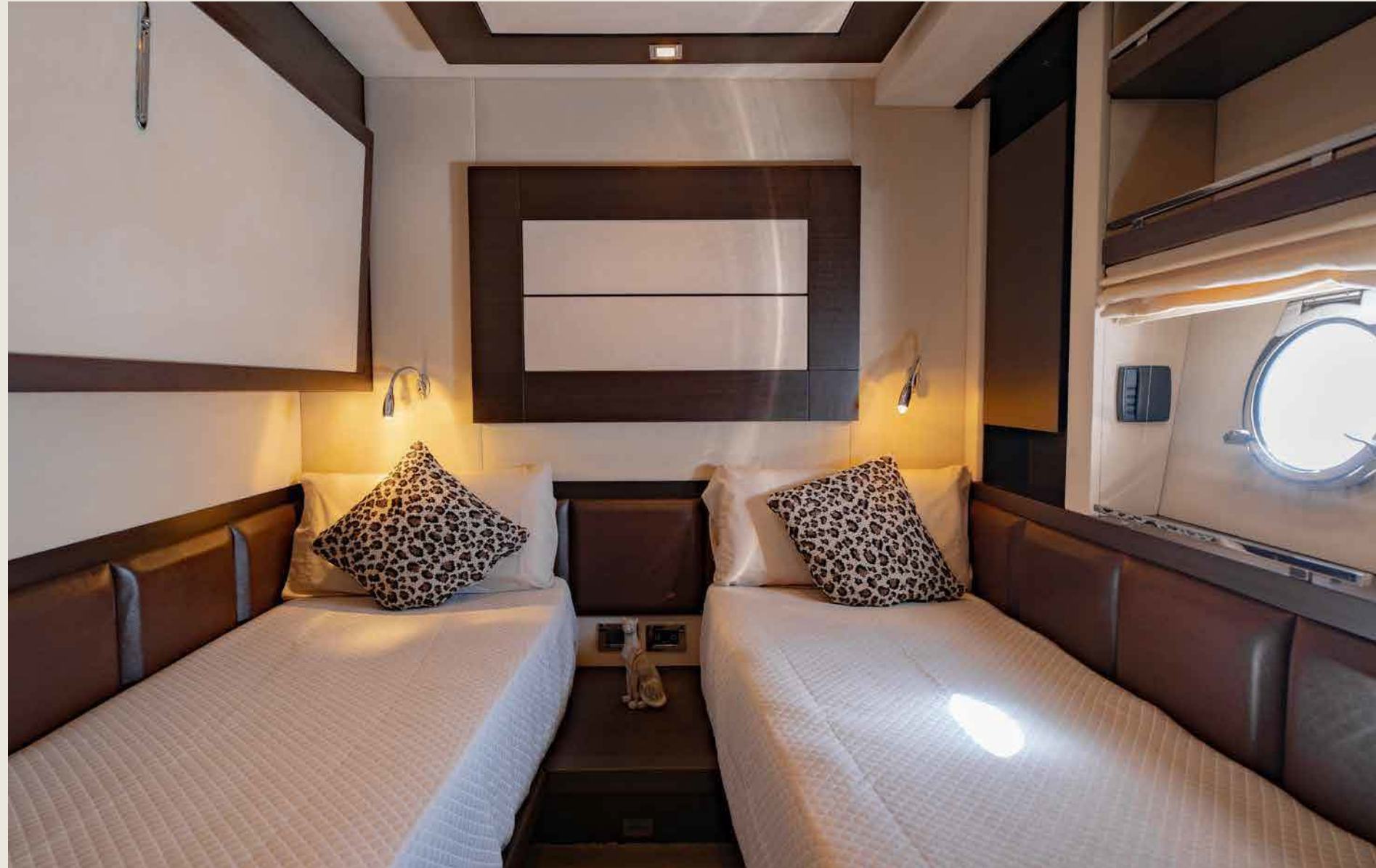
A Z I M U T 8 6

T H E J U N G L E



A Z I M U T 8 6

T H E J U N G L E



A Z I M U T 8 6

T H E J U N G L E